

Scinti

Scinti, the distinct texture



Scinti by Colors® is a modernly pitted texture decorated by tiny metallic inlays. When exposed to direct lighting, the finish will sparkle adding charm to the plastered surface. Scinti is suitable for external as well as internal finishing.

Scinti's 24 carefully picked shades are well distributed over the entire color spectrum, these will answer to every mood and style for both your internal and external projects.

Technical Name

Colored plaster with metallic highlights
Distinct texture

Key Properties

- Unleaded
- Water based
- Non-flammable
- Odorless
- Reduced dirt pick up
- Very low VOC content
- Harsh weather proof – long life
- 24 attractive colors

Pack Size

- 1US Drum – (18.925 liters)

Recommended Uses

Internal and external applications.

Type of Substrate

Plaster, embossed wall coverings, gypsum board, concrete, cement rendering, brick work & block work.

Finish

Rough, slightly pitted finish with metallic highlights.

Coverage

Approximately 1.5kg per square meter.

Drying Time

Touch-dry in 2 hour. Re-coatable after 24 hours (depending on the thickness of the applied coat and ambient temperature).

Thinner

Clean water. No thinning required.

Preparation

All surfaces to be painted should be clean, dry and free from loose and flaking material. Rub down and rinse. Allow fresh concrete to cure properly before application.

Prime the substrate with Colors FONDO from the Colors Stabilizers series.

Instructions

SCINTI is applied using a stainless steel trowel. Before the final coat dries exert a slight circular movement pressure using the trowel in continuous motion to reach the desired aesthetic effect.

Do not apply at temperatures below 5°C or when rain is expected.

Cleaning

Remove as much product as possible from application equipment before cleaning. Clean equipment immediately after use with warm soapy water and rinse thoroughly.

Do not empty product into drains or watercourses.

Additional Info

- Product batches are tested using a quality control system.
- Being in paste ready to use form, SCINTI will only withstand 1 to 3mm thickness per coat

Transportation & Storage

Care should be taken to avoid spillage.

Protect from frost and humidity.



Tel: + 961.1.303414/15
Fax: + 961.1.816428
info@kassaa.com



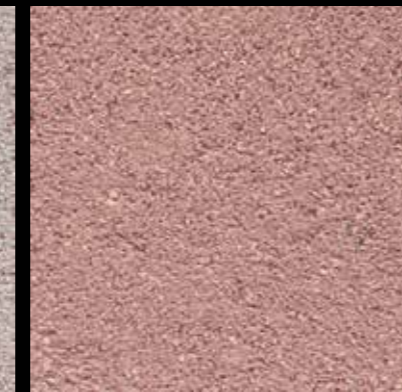
920/01-Cremoso



920/16-Lattè



930/21-Aroma



930/41-Fragolino



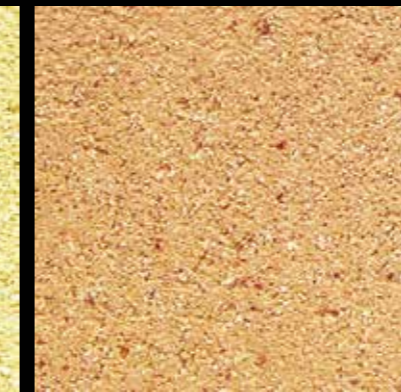
940/53-Sabbia



940/67-Cimino



950/73-Mollica



950/85-Tèpido



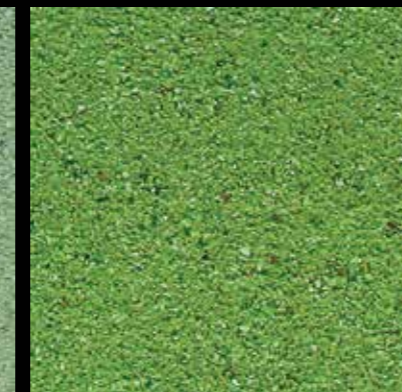
920/09-Dolce



920/05-Melato



930/33-Pistacchio



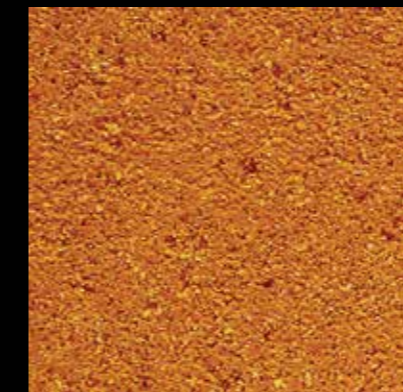
930/27-Pesto



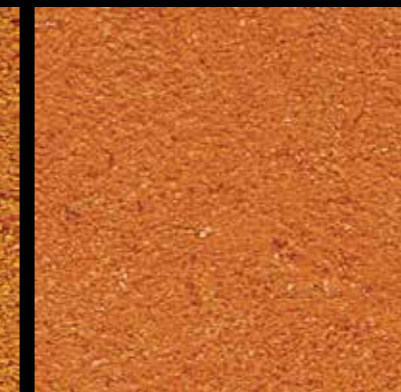
940/60-Omrato



940/58-Argo



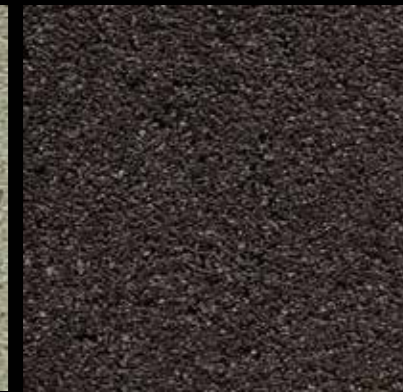
950/82-Avellana



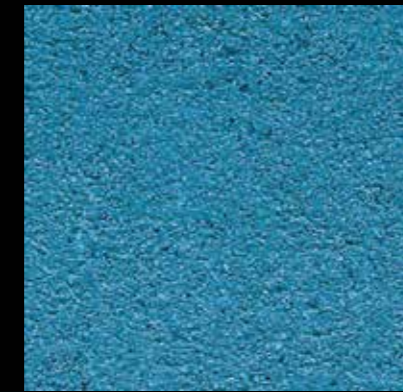
950/92-Bronzino



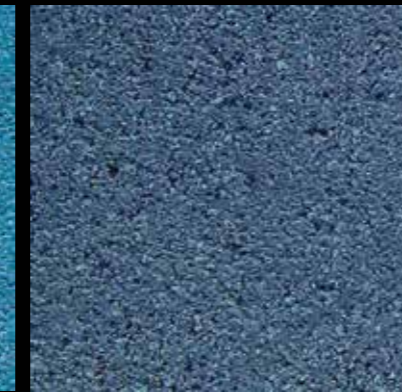
920/13-Panato



920/18-Amaro



930/29-Domenica



930/45-Serale



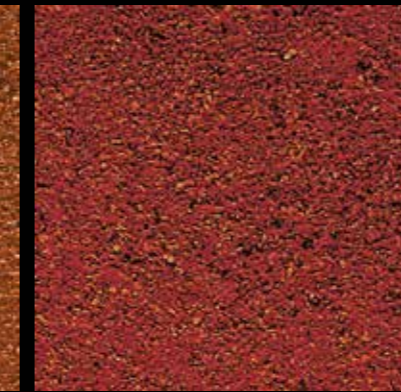
940/51-Burroso



940/62-Caramellata



950/76-Caldo



950/87-Piccante

