

DECORTEK®

SPIRIT OF TUSCANY



880/204 - Thunder **Decortek Duo**



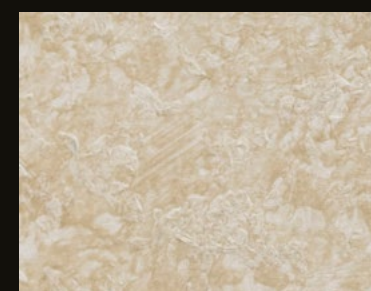
800/204 - Thunder **Decortek**



800/201 - Shadow 1/2 Additive DB Flake



800/202 - Almond 1/2 Additive 6



800/203 - Sea Salt 1/2 Metallo Roman Silver



800/204 - Thunder 1/2 Additive 8



800/00 - Mandolin Gold Additive 8



800/00 - Honey 1/2 Metallo Gold



800/00 - Bright Gold Additive 7



800/00 - Honey Gold Metallo Gold

Decortek®

Decortek® and Decortek® Duo is a water-based decorative paint for interior applications characterized by its versatility. Its polyvalence allows the realization of a wide range of decorative effects ranging from the classical rustic reminiscent of Italy's Tuscany to refine modern metallic effects. Both will help you achieve original and harmonious decorative settings where the choice of colors and finishes can be adapted to all tastes.

Technical Name
Antique Effect Paint.

Key Properties

- Unleaded
- Resistant to shocks and abrasion
- Water based
- Washable (after full curing)
- Non-flammable
- Heat resistant
- Easy to apply
- Wide range of color combination
- Odorless
- 2 base color 800/00-White and 880/00-White
- Very low VOC content in compliance with:
 - EU directive 2010/79/EU
 - French decree No: 2011-321

Pack Size

- 1 US Quart - (1 kg)
- 1 US Gallon - (2.5 kg)
- Additive 0.6 kg and/or Metallo® 0.85 kg (for 1 Gallon)
- Additive 0.24 kg (for 1 Quart)
- DB Flake additive 250 g (for 1 Gallon)
- DB Flake additive 100 g (for 1 Quart)

Recommended Uses

Internal applications.

Type of Substrate

Plaster, embossed wall coverings, gypsum board, concrete, cement rendering, brick work and block work.

Finish

Classical, rustic and metallic.

Coverage

7 - 8 m² per kg.



Drying Time

3 - 4 hours depending on ambient temperature and humidity.

Thinner

Up to 10% of clean water if needed.

Preparation

All surfaces to be painted should be clean, dry and free from loose & flaking material. Rub down & rinse. Prime the substrate with COLORTEK® CO.SHEEN or CO.ACRYL.

Instructions

The metallic shade is obtained by mixing one of the 11 additives with the Decortek® using a paddle or a slow speed mixer until a complete dispersion is achieved. Apply Decortek® with a brush using cross-hatch strokes, create the effect by smoothing the surface with a plastic spatula 10 to 15 minutes later.

Do not apply at temperatures below 5°C or when rain is expected.

Recommendation

To obtain the optimum Decortek® finish and bring out the metallic effect in this product, proper lighting should be directed to the designated walls.

Cleaning

Remove as much product as possible from application equipment before cleaning. Clean equipment immediately after use with warm soapy water & rinse thoroughly.

Do not empty product into drains or watercourses.

Additional Info

Product batches are tested using a quality control system and are ISO 9001: 2008 certified.

Transportation & Storage

Care should be taken to avoid spillage. Protect from frost & humidity.

CODING SYSTEM



Decortek®

Decortek® et Decortek® Duo sont des peintures à l'eau pour intérieur particulièrement polyvalente, permettant la réalisation d'une large gamme d'effets décoratifs allant du rustique classique rappelant la région de la Toscane aux effets métallisés raffinés, contribuant à créer un cadre original et harmonieux où le choix des couleurs et de la finition s'adapte à tous les goûts.

Nom Technique
Peinture à effet antique.

Propriétés

- Ne contient pas de plomb
- Résistant au choc et abrasion
- Produit en base eau
- Lavable
- Résiste à la chaleur
- Facile à appliquer
- Large sélection de couleurs
- Inodore
- 2 couleur de base 800/00-White et 880/00-White
- Faible teneur en COV conformément aux:
 - Directive EU directive 2010/79/EU
 - Decret Français No: 2011-321



Emballage

- 1 US Quart - (1 kg)
- 1 US Gallon - (2.5 kg)
- Additif 0.6 kg et/ou Metallo® 0.85 kg (pour 1 Gallon)
- Additif 0.24 kg (pour 1 Quart)
- DB Flake additif 250 g (pour 1 Gallon)
- DB Flake additif 100 g (pour 1 Quart)

Usage Recommandé

Application en intérieur.

Types de Support

Enduit, ciment, plâtre et plaque de plâtre, anciennes peintures usuelles absorbantes, etc.

Finition

Classique, rustique et métallique.

Rendement

7 à 8 m² par kg.

Temps de Séchage

Environ 3 à 4 heures en fonction des conditions climatiques et de la température ambiante.

Diluant

Diluer avec un maximum de 10% d'eau si nécessaire.

Préparation du Support

Le support doit être dur, propre, sain, sec, cohésif et libre de toute matière telle que salpêtre, mousse, lichen ou autres microorganismes pouvant empêcher l'adhérence du produit sur le support.

Application

Préparer la teinte désirée de Decortek® en mélangeant la base appropriée avec l'un des 11 additifs disponibles et bien mélanger à l'aide d'une palette en bois ou un mixeur. Appliquer Decortek®, à l'aide d'une brosse en effectuant des mouvements croisés de balayage. Laisser reposer la surface 10 à 15 minutes avant de lisser la surface à l'aide d'une spatule en plastique pour obtenir l'effet final.

Recommandation

Il est recommandé d'installer un système d'illumination approprié afin de mettre en valeur l'effet métallique de Decortek®.

Nettoyage des Outils

Éliminer autant que possible le reste du produit de la surface des outils. Nettoyer ces derniers en les frottant vigoureusement avec de l'eau et du savon.

Ne pas vider les restes du produit dans égouts ou les voies d'eau.

Information Additionnelle

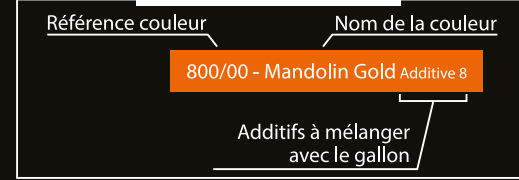
Le processus de fabrication de Decortek® est soumis au plus stricts contrôles de qualité certifiés conformes au standard ISO 9001: 2008



Transport et Stockage

Stocker le produit à l'abri de l'humidité et des températures de gel.

SYSTÈME DE CODAGE



www.colortek.eu
info@colortek.eu



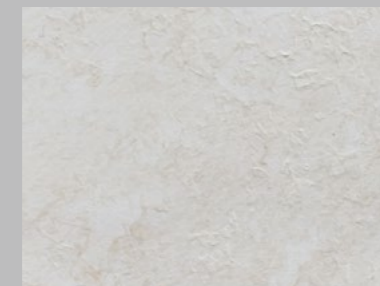
Synergy, Added Value, Continuous Improvement, Diversity, Integrity, Social Responsibility.



800/00 - Seed Pearl Additive 1



800/00 - Snow Drift Additive 5



800/201 - Shadow



800/205 - Minerals Additive DB Flake



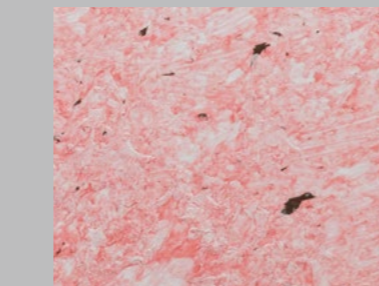
800/209 - Peach Pie



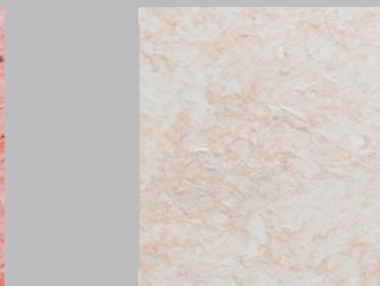
800/213 - Whisp Additive DB Flake



800/217 - Rumba



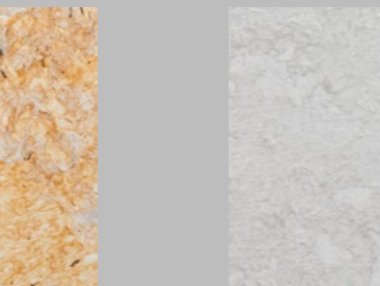
800/221 - Romance Additive DB Flake



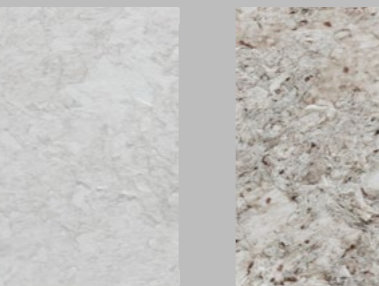
800/225 - Comfort



800/229 - Charmeuse Additive DB Flake



800/233 - Smooth



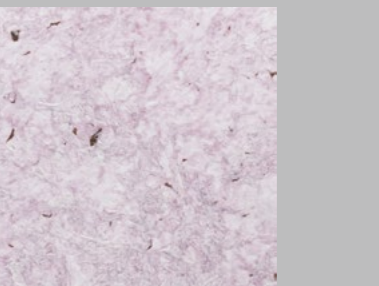
800/237 - Perspective Additive DB Flake



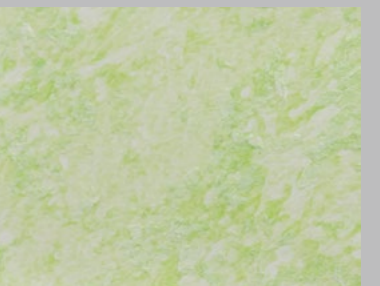
800/241 - Subway



800/245 - Hazy Additive DB Flake



800/249 - Iced Mint



800/253 - Shy Sky Additive DB Flake



800/00 - Pearl Glow Additive 2



800/00 - White Lining Additive 6



800/202 - Almond



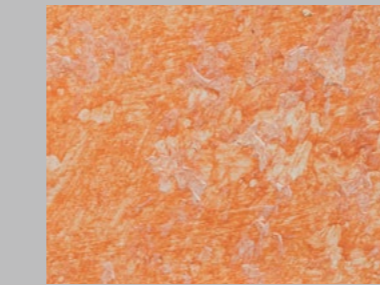
800/206 - Cloud



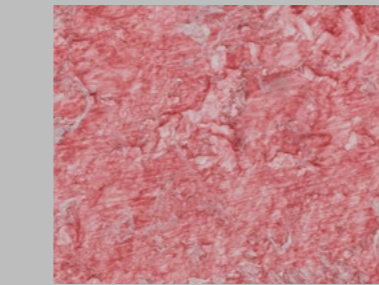
800/210 - Rock



800/214 - Salmon



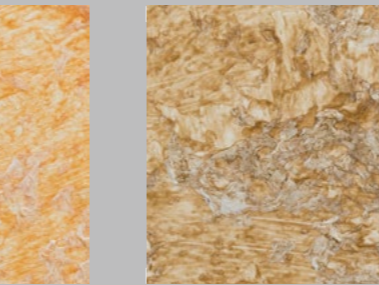
800/218 - Festival



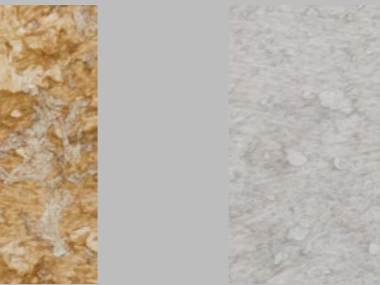
800/222 - Gypsy



800/226 - Fruited



800/230 - Soul Mate



800/234 - Dusty



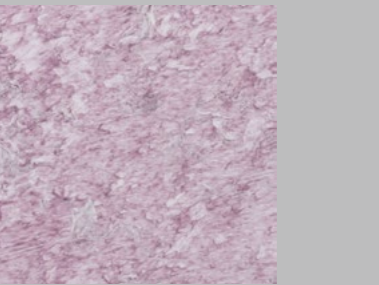
800/238 - Dream



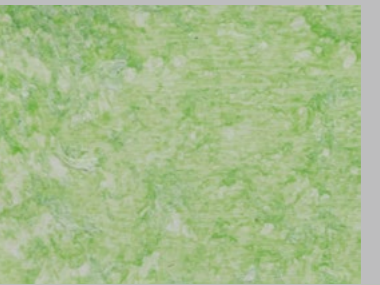
800/242 - Tiles



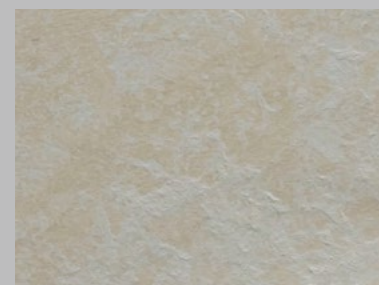
800/246 - Inspired



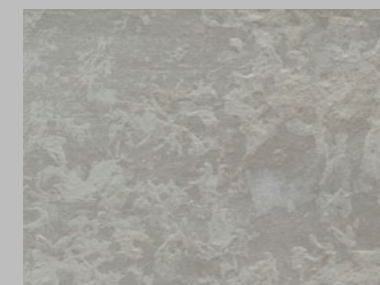
800/250 - Nature



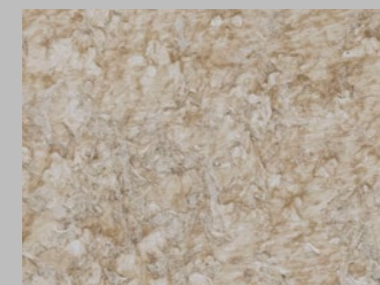
800/254 - Salix



800/00 - Raindrop Additive 3



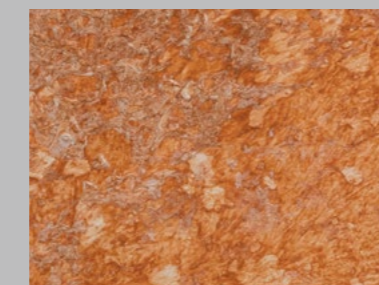
800/00 - White Whisper Metallo Roman Silver



800/203 - Sea Salt



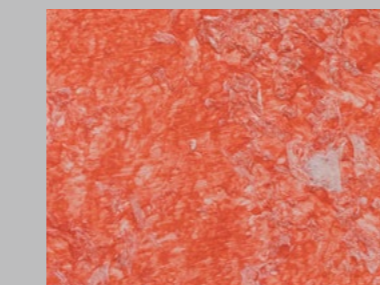
800/207 - Steel



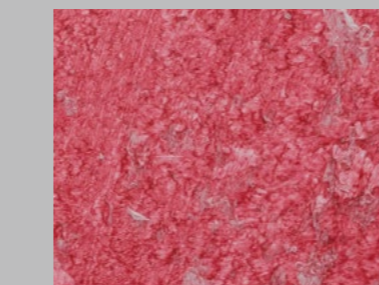
800/211 - Rust



800/215 - Fireball



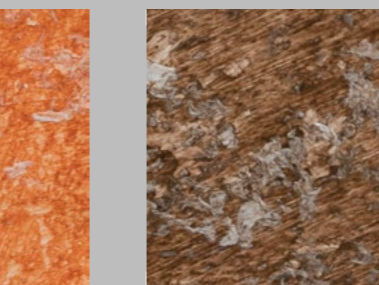
800/219 - Peach



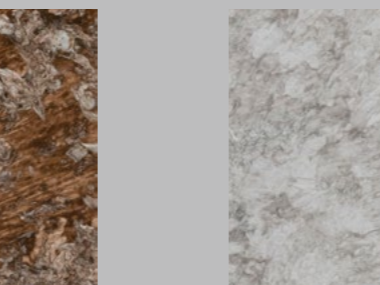
800/223 - Kings Red



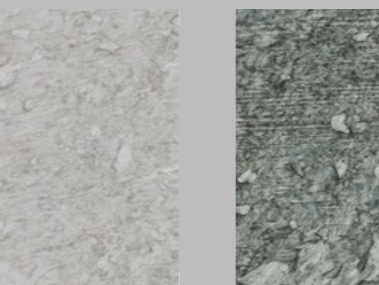
800/227 - Accent



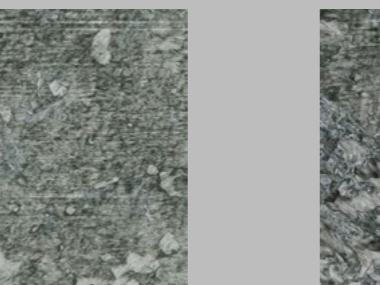
800/231 - Falcon



800/235 - Echo



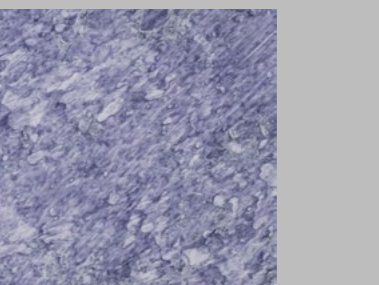
800/239 - Temptation



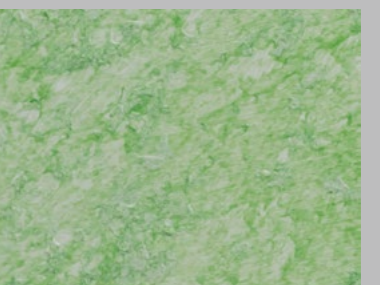
800/243 - Rain Storm



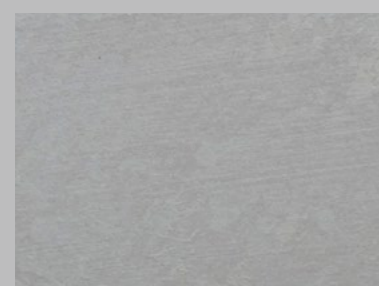
800/247 - Passion



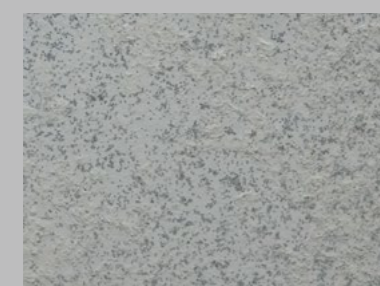
800/251 - Citrus



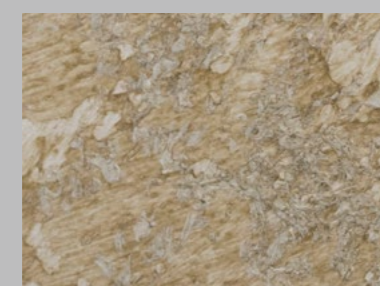
800/255 - Aqua



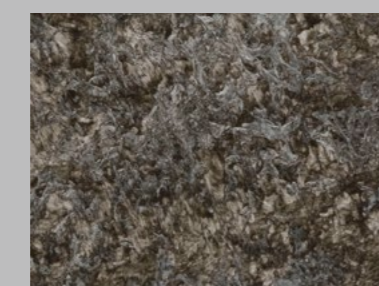
800/00 - Pearl Shell Additive 4



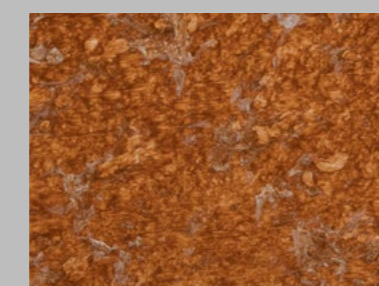
800/00 - Sparkle Additive 9



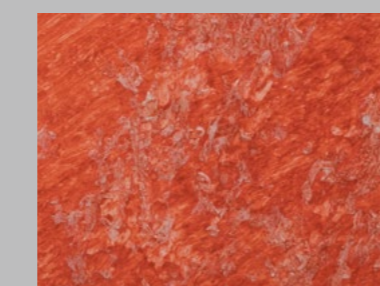
800/204 - Thunder



800/208 - Nickel



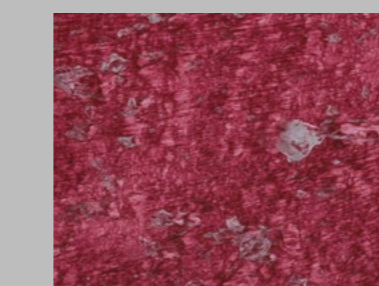
800/212 - Clay



800/216 - Flame



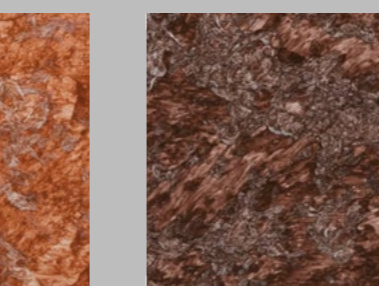
800/220 - Nectar



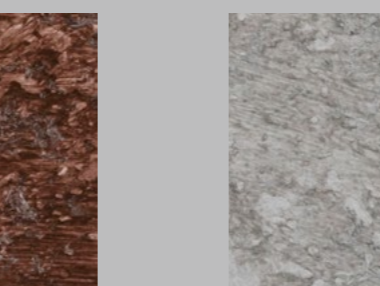
800/224 - Theatre



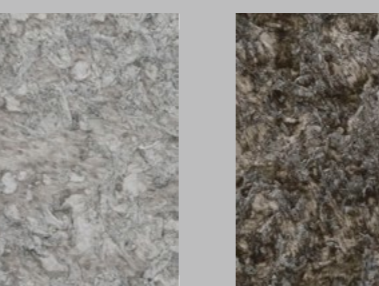
800/228 - Wild



800/232 - Foxy



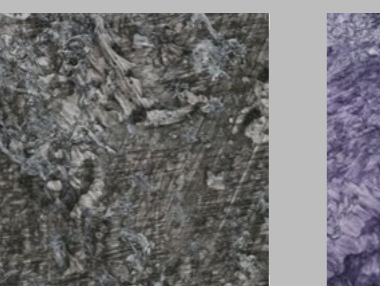
800/236 - Fusion



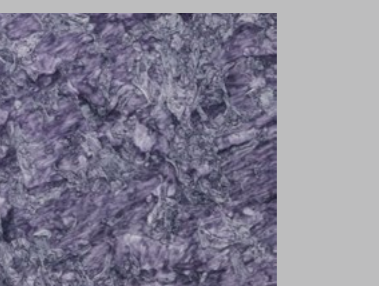
800/240 - Graphite



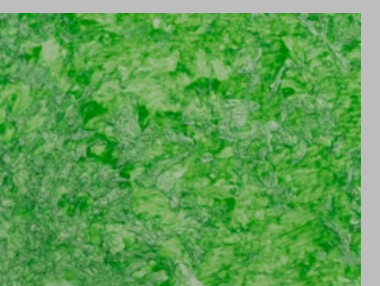
800/244 - Granite



800/248 - Galaxy



800/252 - Exotic



800/256 - Marine